

Compact Telehandlers

Turbofarmer 30.9



**PERFORMANCE AND FEATURES****TF30.9EE****TF30.9-115LEE****TF30.9-115EE****Performance**

Unladen weight (kg)	7100	7100	7100
Maximum load capacity (kg)	3000	3000	3000
Lift height (m)	8.6	8.6	8.6
Maximum reach (m)	5.7	5.7	5.7
Lift height at max. load capacity (m)	5.8	5.8	5.8
Reach at max. load capacity (m)	1.8	1.8	1.8
Load capacity at max. lift height (m)	1200	1200	1200
Load capacity at max. reach (kg)	650	650	650
Boom side-shift (mm)	-	-	-
Frame levelling (%)	-	-	-
Boom section	3	3	3

Powertrain

Engine	Deutz TCD3.6	Deutz TCD3.6	Deutz TCD3.6
Range/Cylinders	3600/4	3600/4	3600/4
Engine power (kW/HP)	70/95	85/115	85/115
Anti-pollution technology	Tier 3	Tier 3	Tier 3
Reversible Fan	●	●	●
Maximum speed (km/h)	40	40	40
Fuel tank capacity (l)	85	85	85
AdBlue tank capacity (l)	-	-	-
Hydrostatic transmission	YES - 2V	YES - 2V	YES - 2V
EPD	PLUS	PLUS	PLUS
Joystick autoaccelerante	STD	STD	STD
Axles	Axial	Axial	Axial
Reducers	Epicyclic	Epicyclic	Epicyclic
Brakes	Dry discs	Dry discs	Dry discs

Hydraulic

Hydraulic pump	LS + FS	LS + FS	LS + FS
Delivery / pressure (L / MIN - BAR)	125-210	125-210	125-210
Hydraulic oil tank capacity (l)	85	85	85
Auxiliary hydraulic service on boom	●	●	●
Rear service line	○	○	○

Cab

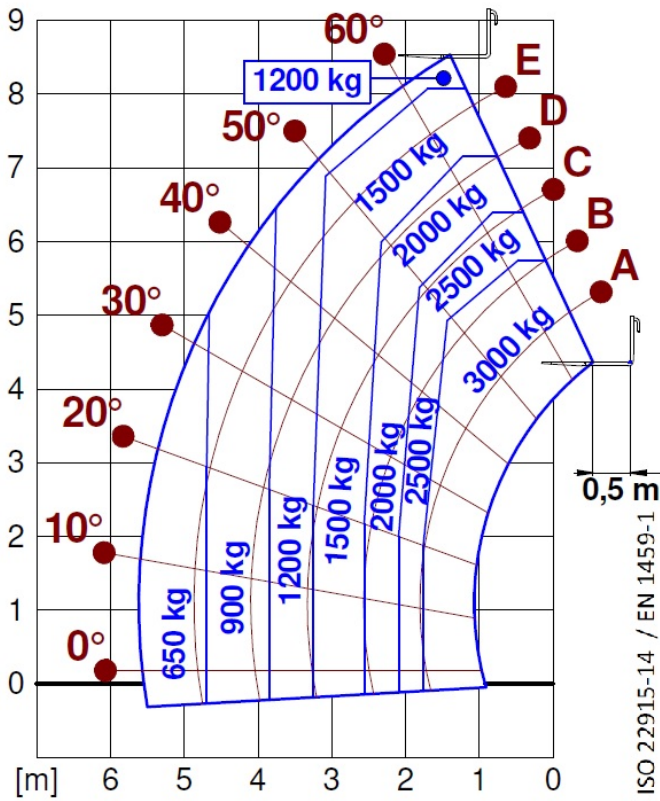
Cab finishing	ECO	ECO	ECO
ASCS	Light	Light	Light
FOPS II Cab	●	●	●
ROPS Cab	●	●	●
Controls	Electronic joystick control	Electronic joystick control	Electronic joystick control
Tilting cab	—	—	—
Reverse shuttle	Dual reverse	Dual reverse	Dual reverse

Configuration

Hydropneumatic Suspension CS Merlo	—	—	—
Hydropneumatic Suspension BSS Merlo	○	○	○
Hydropneumatic Suspension EAS Merlo	—	—	—
Work lights on cab	○	○	○
Sun-shade in the cab	○	○	○
Tac-lock	●	●	●
Pre-arrangement for aerial work platform	○	○	○
Two floating forks	●	●	●
Pedal Inching-Control	●	●	●
Permanent four-wheel drive	●	●	●
All wheel steering	●	●	●
Three steering way	●	●	●
Standard tyres	—	—	—
OPT tyres	—	—	—
Hydraulically controlled stabilizers	—	—	—
Turret rotation	—	—	—
Tractor type approval	—	—	—
Pneumatic brakes (ton)	—	—	—
Hydraulic brakes (ton)	○	○	○
PTO	—	—	—
3-point rear linkage	—	—	—



— not available
● standard
○ optional



Dimensions



	TF30.9EE	TF30.9-115LEE	TF30.9-115EE
A - Length	4330	990	990
C - Wheelbase	2740	3910	3910
F - Ground clearance	290	290	290
H - Width	2100	2100	2100
M - Cabin width	1010	1010	1010
P - Height	2120	2020	2120
R - Turning radius at wheels	3930	3930	3930
S - Turning radius at forks	4660	4660	4660

Your Merlo dealer

MERLO S.P.A.

Via Nazionale, 9

12010 S. Defendente di Cervasca, (Cuneo) Italia

Tel. +39 0171 614111

Fax +39 0171 684101

info@merlo.com

www.merlo.com



